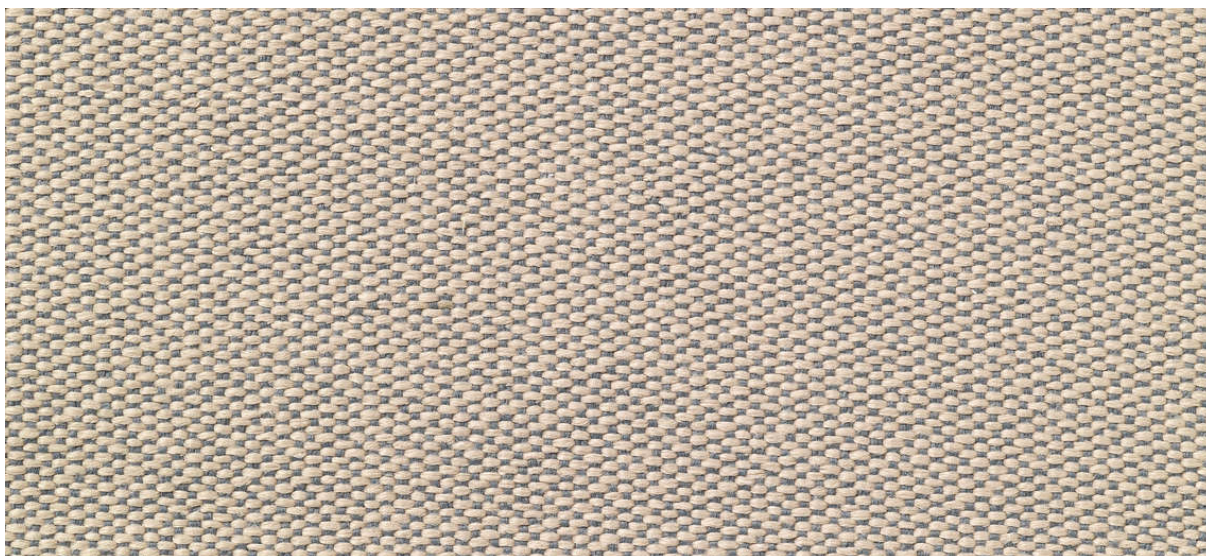


# deans

7048.01 - 7048.15



binder

**upholstery 02**

description

**double faced upholstery, with a plain look on one side and a mélange pattern on the other side**

composition

**100% flame retardant polyester**

width

**± 138 cm, ± 54 inches**

weight

**± 861 gr/m<sup>1</sup>, ± 28 oz/yd<sup>1</sup> fabrics**

flame retardancy

**EN 1021/ 1- 2**

**BS 5852, crib 5**

**NF P 92 / 503 - 507, M1**

**DIN 4102, B1**

**IMO 2010 FTP part 8**

**UNI 9175, classe 1**

**Cal TB 117**

abrasion

**ISO 12947-2**

110.000 rubs martindale

**ASTM D4157**

100.000 double rubs wyzenbeek

pilling

**ISO 12945-2**

4 (scale 1-5)

**ASTM D3511**

3 (scale 1-5)

colorfastness to crocking

**ISO 105-X12**

wet 4-5 / dry 4-5 (scale 1-5)

**AATCC 8**

wet 5 / dry 5 (scale 1-5)

colorfastness to light

**ISO 105-B02**

6-7 (scale 1-8)

**AATCC 16.3: 40 hours**

5 (scale 1-8)

seam slippage

**ISO 13936-2**

warp 4.3 mm/ weft 3 mm

**ASTM D4034**

warp 39 lbf / weft 85 lbf

care



# deans

7048.01 - 7048.15

