

elba

8069.01 - 8069.20



binder

curtain 02

description

structured melange look curtain fabric, black out

composition

100% flame retardant polyester acrylic coating

width

± 277 cm, ± 109 inches

weight

± 1075 gr/m¹, ± 35 oz/yd¹ fabrics

thermal & visual comfort

EN 14501

class 4 (scale 1-4)

AATCC 148

100% light blocked

flame retardancy

EN 13773, class 1

BS 5867-2, type B

DIN 4102, B1

UNI VF 8456-8457, classe 1

NFPA 701:2010-1

CAN/ULC S109

IMO 2010 FTP part 7

colorfastness to crocking

ISO 105-X12

wet 4-5 / dry 4-5 (scale 1-5)

AATCC 8

wet 5 / dry 5 (scale 1-5)

colorfastness to light

ISO 105-B02

5 (scale 1-8)

AATCC 16.3: 60 hours

2.5 (scale 1-5)

care



shrinkage: warp -0.9% / weft -0.6%



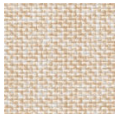
shrinkage: warp -1.5% / weft -1.2%



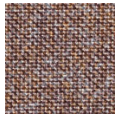
© Hochschule Niederrhein 2012

elba

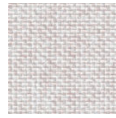
8069.01 - 8069.20



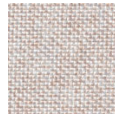
8069.01



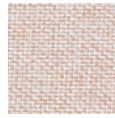
8069.02



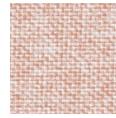
8069.03



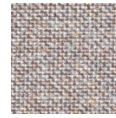
8069.04



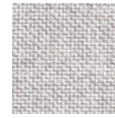
8069.05



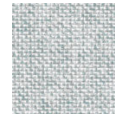
8069.06



8069.07



8069.08



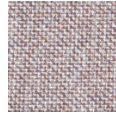
8069.09



8069.10



8069.11



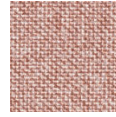
8069.12



8069.13



8069.14



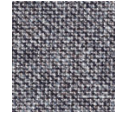
8069.15



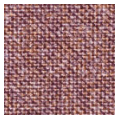
8069.16



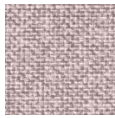
8069.17



8069.18



8069.19



8069.20